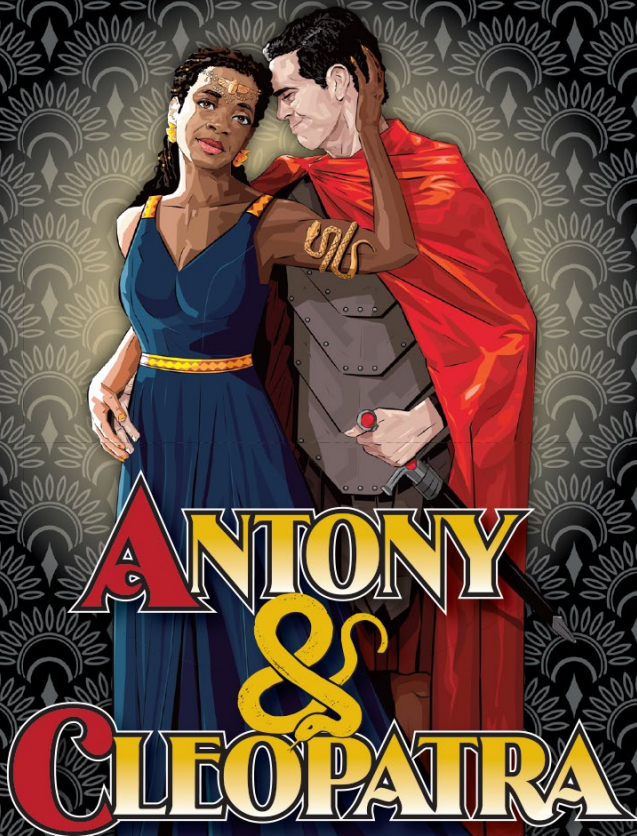




SOUTHERN SHAKESPEARE COMPANY



# ANTONY & CLEOPATRA

Written by William Shakespeare  
Directed by James Alexander Bond

**May 11-14, 2023**  
FREE Shakespeare in Cascades Park



Visit Tallahassee  
It's just what you need.



Tallahassee  
Community  
Redevelopment  
Agency



Tallahassee  
COMMUNITY  
COLLEGE



Florida  
ARTS & CULTURE

[SouthernShakes.org](http://SouthernShakes.org)



May 13th Only



SOUTHERN SHAKESPEARE  
COMPANY



TALLAHASSEE  
COMMUNITY COLLEGE

*are excited to bring*

## Camp Shakespeare for Rising 3rd Grade through 9th Grade Students

*Structured with rotating activities for  
individual age groups, this week-long camp  
offers something for everyone!*

# Where *Play's* the Thing!



## CAMP SHAKESPEARE

SOUTHERN SHAKESPEARE COMPANY

Presented by



**June 26-30 • 3rd-9th grade**

[www.SouthernShakes.org/camp](http://www.SouthernShakes.org/camp)

[SouthernShakes.org](http://SouthernShakes.org)



SOUTHERN SHAKESPEARE COMPANY

*presents*

# ANTONY & CLEOPATRA

*by William Shakespeare*

*\* Shakespeare's **Antony & Cleopatra** contains simulated violence and suicide.  
If you or someone you know is in crisis, call \*988 for support.*

*Guest Director*

**James Alexander Bond\***

*Executive Director*  
**Bianca Montague**

*Music Director*  
**Ben Gunter**

*Production Manager*  
**Calla MacNamara**

*Stage Manager*  
**Stephen Smith**

*Scenic Designer*  
**Jack Jammer**

*Sound Production*  
**Blake Bosarge**

*Costume Design*  
**Katy Fedore**

*Lighting Design*  
**Todd Randall**

*Master Builder*  
**Mike Mock**

*ASL Interpreters*  
**Stevie Fenton**  
**Ben Jackson**

*With **Kelsey Scott\*\*** as Cleopatra*

# INTRODUCING OUR

## 2023-24 SEASON

COME JOURNEY WITH US!



### Something Wicked This Way Comes

By Ray Bradbury

When the carnival comes to town, two boys unearth the terrifying and horrible secrets that lurk within Cooger & Dark's Pandemonium Shadow Show and learn the consequences of wishes, as a sinister and evil force is at work in Green Town, Illinois.

OCTOBER 2023

### The Shape of Things

By Neil Labute

A young student drifts into an ever-changing relationship with an art major while his best friends' engagement crumbles, so unleashing a drama that peels back the skin of two modern-day relationships.

NOVEMBER/DECEMBER 2023



### Legally Blonde

Book by Heather Hach

Music and Lyrics by Laurence O'Keefe & Nell Benjamin

The ultimate tribute to girl power, Legally Blonde will take you from the UCLA sorority house to the Harvard halls of justice with the timely coming of age story of Broadway's brightest heroine.

APRIL 2024

[tcc.fl.edu/theatretcc](http://tcc.fl.edu/theatretcc) | [theatretcc@tcc.fl.edu](mailto:theatretcc@tcc.fl.edu)



## DIRECTOR'S NOTES

Love, pleasure, decadence, honor, loyalty, betrayal, strategy, manipulation, and power. Long before *Games of Thrones* or *Succession*, Shakespeare wove these threads together in *Antony and Cleopatra*.



Julius Caesar, Gnaeus Pompey, and Markus Crassus formed the first Triumvirate of Rome. When the republic was unstable, engulfed in civil unrest, these three men set aside their contempt for each other to dominate the government, even controlling elections to seize power. In the decade that followed, democracy declined as Julius Caesar rose to dictatorship. Ultimately, he became too voracious for dominance, so his friends and colleagues conspired to stab him twenty-three times... but that's another story.

Our tale of intrigue takes place under the second Triumvirate of Mark Antony, Lepidus, and Octavius Caesar, son of Julius. Together, they should form a strong ruling body, but away from the dogmatic morality of regimented Rome, Antony finds in exotic Egypt an all-encompassing and intoxicating love, Cleopatra. Octavius is well aware of the allure and danger she presents. After all, she was his father's mistress.

Antony and Cleopatra's love is frenzied but far from ideal. She is a beautiful queen, the most powerful woman in the world and he is a strong general, leader of the greatest armed forces ever seen. Yet, power and strength are no match for their possessiveness, mistrust, and skewed judgement. When together, reason is gone and the rest of the world tuned out. When separated, jealousy and suspicion take over. Bad choices are made on both sides. Like many obsessive relationships, the passion that draws them together tears them apart. Antony and Cleopatra could have had it all—the ultimate power couple. Instead, when it seems they have nothing left, they take their own lives—he out of despair for what he has lost, and she as the only means left to control her destiny.

Most tragic heroes reach some clarity before they fall, at last seeing the error of their ways, but not Antony and Cleopatra. Even to the final moments preceding their deaths, they optimistically presume an afterlife where they can make the same mistakes all over again. It would be funny if it weren't so tragic—*or vice versa*.

**James Alexander Bond**

[www.nycdirector.com](http://www.nycdirector.com)

An advertisement for 'YE OLD SHAKE SHOPPE!' featuring merchandise. The background is a solid yellow color. On the left, a black t-shirt is shown with a white graphic of a man's face and the word 'COMEDY' below it. In the center, there is a black tote bag with a logo, a black mug with the words 'WILL POWER' in white, and a black baseball cap with 'SOUTHERN SHAKESPEARE FESTIVAL' in white. On the right, a man is wearing a black t-shirt with a yellow graphic that says 'ANTONY &amp; CLEOPATRA' and 'FESTIVAL' with a yellow snake illustration. The text 'YE OLD SHAKE SHOPPE!' is written in large, red, stylized letters at the top. Below it, the text 'Southern Shakes swag at our booth open throughout the Festival . . .' is written in black.



**Christian Formation**  
**Classical Learning**  
**Covenant Partnership**  
**Gracious Citizenship**

New financial aid programs  
available in the state of Florida

[www.fl DOE.org/schools/school-choice](http://www.fl DOE.org/schools/school-choice)

[christclassical.com](http://christclassical.com)

# CAST & CREW

## CAST LIST

(listed alphabetically)

Zira Brown	Charmian
Ryan Burk	Ambassador, Dercetus, Soldier
Bucky Clements	Gallus, Menas, Canidius, Messenger, Soldier, Guard
Nicolas Florez-Ortiz	Eros, Menecrates
Anthony Gallo	Pompey, Maecenas, Thidias
Erin Grubbs	Philo, Agrippa
Hannah Hennessey	Mardian, Messenger
Ray H. O'Neal Jr., Ph.D.	Soothsayer, Lepidus, Guard
R. Geoffrey Place II	Enobarbus
Alec Ruiz**	Mark Antony
Kelsey Scott**	Cleopatra
Patrick Sternad	Alexas, Scarus, Messenger, Soldier, Guardsman
Mila Sumrall	Iras
Matthew Thompson	Octavius Caesar
Faith Verbsky	Octavia, Cleopatra Stand-In
Hera	Snake

## PRODUCTION STAFF

Director	James Alexander Bond*
Intimacy Coordinator	Hannah Fazio
Costume Designer	Katy Fedore
Assistant Director	Marisa Hasty
Stage Manager	Stephen Smith
Assistant Stage Manager	Sam Smith
Set Designer	Jack Jammer
Snake Wranglers	Brian S. Weinstein, Nicholas Petryk
Music Director/Musician	Ben Gunter
Lighting Designer	Todd Randall
Sound Design/Musician	Stephen Hodges
Producer	Calla MacNamara
Master Carpenter	Mike Mock
Set Construction / Carpenters	Hannah Hennessey
ASL Interpreter (May 13th Performance Only)	Stevie Fenton, Ben Jackson
Scenic Painters	Bob & Melinda Copper
Sound Production	Blake Bosarge
Sound Technician	Ashley Costello
Photographer	Bob Howard
Props Designer/Manager	Marnie Earl
Costume Manager	Lily Nichols
Poster Art Illustration	Blake Kandzer
Set Dressing	Marnie Earl
Musician	Michael McKenzie, Greg Gandy, Janel Caine, Russell Almond

\* Member of the SDC - The Stage Directors and Choreographers Society | \*\* Member of the Actors Equity Association

## GUEST CELEBRITY - KELSEY SCOTT

Kelsey Scott began her career in the theatre scene of her hometown of Atlanta. Best known for her role as Anne Northup in the Oscar-winning *12 Years A Slave* and her two-season arc as Wes Gibbins' mother, Rose, on *How to Get Away With Murder*, her credits also include: *Better Call Saul*, *Insecure*, *NCIS*, *True Detective*, and the CW's *Dynasty* reboot. She is a 2019 Daytime Emmy nominee for her Guest Star role on *Giants*. In 2017, she received a Primetime Emmy Nomination for her leading role on *Fear the Walking Dead: Passage*. On stage, Kelsey originated the role of Ann Madison in Pearl Cleage's political romance, *What I Learned in Paris*. Her theatre resume also showcases her vocalist work, with lead roles in productions of *Once On This Island*, *Little Shop of Horrors*, and a touring company of *Dreamgirls*.



## MUSIC DIRECTOR'S NOTES

Where can you find music that echoes Enobarbus' description of Cleopatra? "Age cannot wither her, nor custom stale her infinite variety!"

We tried chants that survive from ancient Egypt. We dug up hymns that were known to imperial Rome. What we found were tunes that sound exotic, but oddly sameish. Not varied enough for a world where Antony and Cleopatra test the limits of making love last by constantly surprising your lover.

So the tunes you'll hear tonight come not from Cleopatra's Egypt or Antony's Rome, but straight from Shakespeare's England. We're stealing melodies and abstracting harmonies from composers Shakespeare knew and commissioned to set songs for his own productions of his own plays – composers like Thomas Morley, John Dowland, John Wilbye, and Orlando Gibbons (who shared first names with the male lead in *As You Like It*).

Why? Because these Elizabethans make opalescence audible. Their music is constantly ambushing your ear. Their meters shift from duple to triple, and just when you think their harmony is firmly settled in one key, a cadence flips a switch to take you in a seductively different direction. Their compositions conform to Cleopatra's counterpoint for keeping Antony enthralled: "If you find him sad, say I am dancing; if in mirth, report that I am sudden sick. Quick, and return."

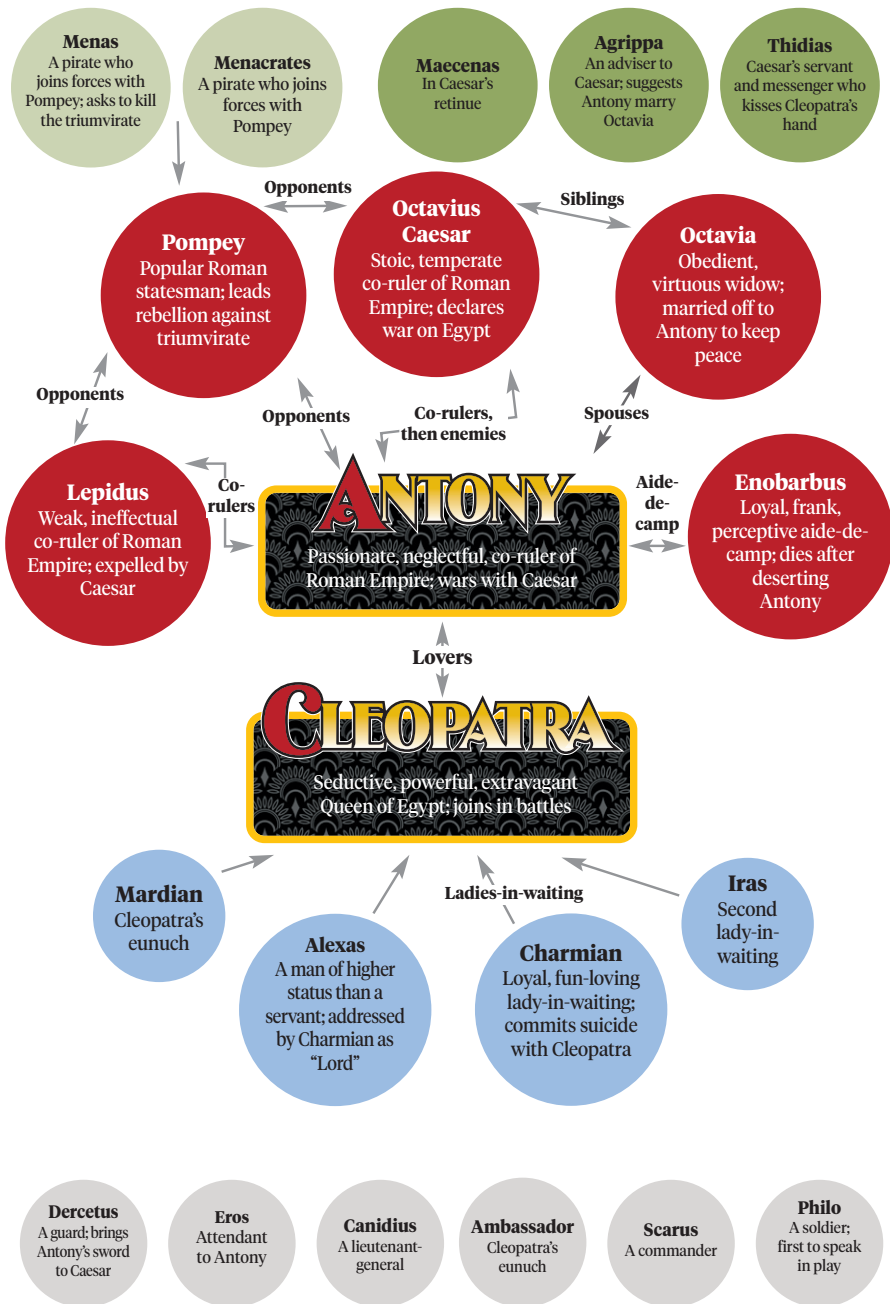
You'll have to listen quick to hear it – most of our music flies as fast as a *Law & Order* "dun-dun" – but our orchestra includes instruments that Shakespeare knew. Sweet-voiced recorder and wooden flute. Brash-voiced double-reed shawm and curtal. Even the droning of a hurdy-gurdy.

Keep an eye peeled for musicians, too. You won't see the full live orchestra. With so much action onstage, there's no place left to shoehorn in the band. But Shakespeare's script is remarkably directional about music cues – witness the stage direction "music of the hautboys is under the stage" in the night watch before Antony's last battle. So listen for ear-kissing music coming at you from surprising directions. We hope you find yourself falling in love with an ever-fresh variety of sound!

**Ben Gunter**  
Music Director



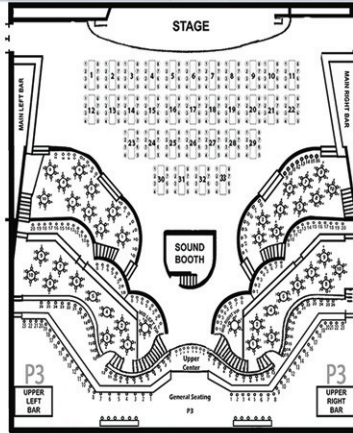
# CHARACTER CHART





The Moon 38 Years

MoonEvents.com



For 38 years, The Moon has been Tallahassee's premier variety showcase for entertainment and community events.

The Moon was designed for event diversity and flexibility. The Moon is Tallahassee's Community Arts Center.

The Moon opened with a pop-rock group The Producers, and within three weeks hosted "nonsmoking" Dance Nights, a classical performance by Leonidas Lipovetsky, jazz with Sypro Gyro, country with John Anderson, R&B with The Manhattans, and Big Band by Guy Lombardo.

The Moon has been home to such headliners as Dionne Warwick, Hall & Oats, The Temptations, Bonnie Raitt, John Prine, Joe Cocker, Willie Nelson, George Strait, Kenny Chesney, The Judds, Billy Dean, Jimmy Buffet, BB King, George Clinton and more.

In addition to our diverse programming of events, hundreds of benefits have been hosted at the Moon, including fundraisers, galas, and events for worthy causes throughout our region.

Some of the longrunning charitable organizations that have hosted their benefit events at The Moon include; Springtime Tallahassee, Carmen Cummings Sickle Cell Gala, The Pyramid Players, Big Bend Cares, Big Bend Hospice, Alzheimer's Benefit, City Church services, St. Peter's Anglican Church, Muscular Dystrophy Association, Word of South Festival, Lloyd Music Festival, The Urban League Gala, Capital City Press Skits, Tom Joyner Live Shows, The American Red Cross, Legislative Black Caucus, Habitat for Humanity, Fraternal Order of Police, FAMU Annual Homecoming Alumni Galas, The Governor's Inaugural Ball and many more.

Contact: Scott Carswell; [Scott@MoonEvents.com](mailto:Scott@MoonEvents.com); 850.878.6900

# 2023 MEMBERS

## **Bard Level Sustaining Members**

Nancy O'Farrell  
Misty Taylor  
Wrathell, Hunt & Associates, LLC

## **Author Level Sustaining Members**

Bob & Marian Reid  
Phil Croton  
Chip Chalmers  
Mark Seidenfeld & Colleen Kelley  
Yelena & Preston McLane  
Becky Tolnay  
Bob Rackleff  
Laura W. Johnson  
Wendy Wiener

## **Scribe Level Sustaining Members**

David Watson  
Ivy Miles  
Will Buckner  
Jennifer Fitzwater  
Daniel LeMay  
Bohemian Babushka

## ***Special Thanks***

*A TREMENDOUS thank you to our festival coordinators Wendy Wiener and Gretchen Jones, for making our festival event possible every year!*

*We would also like to thank the following people who have gone above and beyond the call of duty to see our company and festival rise to new heights this year:*

*Our partners at Tallahassee Community College, Theater TCCI, Terri Carrion, Midtown Reader, FSU College of Music, Opening Nights, Hummingbird Wine Bar, The Chocolate Dandies, Ken Fredricksen, Jacob Inman, Wayne Almy, Shandrika Batey, Laurie Swiger, Karen Jusevitch, Kelly and Michael Beck, Scott and Julie Carswell, Kelby Siddons, Danielle Johnson, Phil Croton, Jessica Lowe-Minor, Devin P. Cywinski and the amazing team at Dark Knight Security Solutions LLC, Al and George Cuneo and all of the staff at Cuneo Creative, our SSC board, staff, and all of our amazing volunteers!*

*And a very special thanks to our celebrity guests appearing as Gestus! Darryl Jones, District 3 LCS School Board Representative, LCS Superintendent Rocky Hanna, FSU First Lady Dr. Jai Vartikar, and artist and gallery owner Quia Z Atkinson.*

## ***Special Thank You to Our Sonnet Contest Judges***

*Dr. Celia R. Caputi, Devon Glover, and David Kirby.*

## CAST BIOGRAPHIES

**RYAN BURK** – (*Ambassador, Dercetus, Soldier*) has over 25 years of theatre experience, including appearances in *Noises Off*, *The Eight Reindeer Monologues*, and *A Christmas Carol*. When Ryan is not acting he is an avid pickleball player and enjoys the Tallahassee Senior Games. In his professional life, Ryan is a financial advisor. Ryan would like to thank his mom Andrea, wife Kelley, and his friends and family for their undying support of him and the arts.



**ZIRA BROWN** – (*Charmian*) started acting during her freshman year of highschool (2014) and she feels blessed to still have a passion for it. Zira's had the pleasure of being a part of so many amazing shows and films, but some of her favorite characters include Tilly Evans (*She Kills Monsters*), Hoplon (*Antigone*), Jahkyra Bennet (*The Black Card film*), and Sam (*Eyelash film*). Antony & Cleopatra is the first Shakespearean play she's ever performed in, and she had a blast with the cast and crew!



**BUCKY CLEMENTS** – (*Gallus, Menas, Canidius, Messenger, Soldier, Guard*) holds a BA in Theatre from the University of Alabama, and currently serves as Performing Arts Coordinator at Pyramid Studios. He has been involved, both onstage and backstage, with several theatre companies in Alabama, Mississippi, and Florida. He has been seen previously on the SSC stage in the roles of Young Seward/Menteith (*Macbeth*) and Antonio (*Twelfth Night*).



**NICOLAS FLOREZ-ORTIZ** – (*Eros, Menecrates*) started their acting career in Tallahassee, FL and is excited to be in their first Tallahassee and SSC production. Favorite roles include Mark (*Dear Rachel*) and Anthony (*Echoes*).



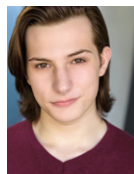
**ANTHONY GALLO** – (*Pompey, Maecenas, Thidias*) is a senior BA Theatre major at FSU and is from Waxahachie, TX. Anthony is making his professional debut in this production. Previous credits include Peter (*Something Rotten!*), Miss Trunchbull (*Matilda: The Musical*), and Judas (*Godspell*). He would like to thank his friends and family for all their love and support!



**ERIN GRUBBS** – (*Philo, Agrippa*) is excited to be in his first SSC production. After getting his BA in Theatre from FSU, he has had the privilege of acting and teaching for Children's Stage Adventures; owning and directing for Phoenix Theatre in Thomasville, GA; and performing for many local theatre companies.



**HANNAH HENNESSEY** – (*Mardian, Messenger*) is a sophomore in the FSU School of Theatre BA program and is very excited to be playing in this production. She has built multiple SSC sets including this one, but this is the first time she will be performing on their stage. Some of Hannah's other notable roles include the Balladeer and the Priest (The Freedom of The City, Irish Repertory Theater); Paloma in (Something Old, White Mouse Productions); and Amanda (Chlorine, White Mouse Productions).



**RAY H. O'NEAL, JR., PH.D.** – (*Soothsayer, Lepidus, Guard*) is an actor and professor of physics and astronomy at FAMU. He is excited to perform alongside the talented and seasoned theatre professionals in his first SSC appearance. Recently appearing in Theatre Tallahassee's production of *The Tempest* (Prospero) dir. Nathan Williamson, Prof. O'Neal started his acting career in Washington, DC, appearing in Theatre on a Hill's production of *The Crucible* (Rev. John Hale), dir. Linell Grundman; understudying Thomas W. Jones II (Vladimir) and Donald Griffin (Estragon); and appearing as Vladimir in the Studio Theatre's production of



# CAST BIOGRAPHIES

*Waiting for Godot*, dir. Joy Zinoman. He has studied dramatic performance at Stanford University (Palo Alto, CA), The Michael Howard Studio (New York City, NY), and locally with Marlene Dubois.

**R. GEOFFREY PLACE II** – (*Enobarbus*) began his acting career in Baton Rouge, LA and is ecstatic to be performing in his second production with SSC, having previously performed as Mark Antony (*Julius Caesar*). Geoffrey was last seen



performing as Otto Frank (*The Diary of Anne Frank*) and currently pursues his other passion as a staff attorney at the First District Court of Appeal. He would like to eternally thank his wife, his son, his sister, and the rest of his family, all for giving him the support and ability to pursue what he loves, and the courage to do so.

**ALEC RUIZ**– (*Mark Antony*) is a Cuban-American actor and voice-over artist based out of NYC. He's an FSU alum and is excited to return to Tallahassee to make his SSC debut. Alec has toured across the country in the first national tour of *Tootsie the Musical* and throughout Europe on AIDA Cruise Lines as a Lead Vocalist. Other favorite credits include Gomez (*The Addams Family*), Ralph (*Butterflies Are Free*), and Truffaldino (*The Servant of Two Masters*). More credits and information can be found on [alecruiz.com](http://alecruiz.com) and IMDB. He'd like to thank his beautiful fiancée and family for their never-ending love and support. Instagram: [@alecricardo95](https://www.instagram.com/alecricardo95)



**PATRICK STERNAD** – (*Alexas, Scarus, Messenger, Soldier, Guardsman*) is beyond excited to be working with SSC for the third year in a row. You may have seen him on this stage as Sebastian (*Twelfth Night*) or Conrade (*Much Ado...*), for which he wrote asinine biographies he probably should have been forced to rewrite since they were highly unprofessional and off-topic. He continues the tradition this year, but doesn't have anything funny to say. He is now going to stop writing this biography, which has been a complete waste of everyone's time, and just go to bed or something.



**MILA SUMRALL** – (*Iras*) is a sophomore at FSU studying Theatre and Psychology, as well as a local actor and comedian. She is the Vice President of 30in60 Sketch Comedy and does stand-up in her free time. She is so excited to be doing her second show with SSC! Favorite previous roles include Moonface Martin (*Anything Goes*), Margaret White (*Carrie*), and Claire (*Proof*).



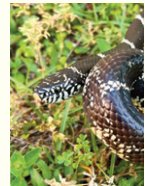
**MATTHEW THOMPSON** – (*Octavius Caesar*) is so thankful to be back with SSC! Previous SSC productions include: *Much Ado About Nothing* (Friar/Night's Watch), *Twelfth Night* (Andrew Aguecheek), *A Mini-Midsummer Night's Dream* (Puck), and *Romeo & Juliet* (Mercutio/Apothecary). He would like to thank his family for their constant love and support, James for the opportunity, as well as Gerain, Hannah, Daniel, Steven, Eva, Phil, and Laura. He would like to dedicate his performance to Steven Cruz. "Onward and upward, dear friends!"



**FAITH VERBSKY** – (*Octavia*) started her acting career here in Tallahassee, FL and is excited to be in her second SSC production after playing Portia (*Julius Caesar*). She would like to thank her friends and family for their continued love and support.



**HERA** is a common Eastern Kingsnake. Like all native kingsnakes, she is non-venomous and does not pose a danger to people or pets. Kingsnakes have a broad diet and will eat other snakes, including venomous snakes. They are resistant to snake venom! They may be found in a wide variety of northern Florida habitats. Hera's handlers are Brian Weinstein and Nicholas Horton.





FIRST FEDERAL BANK

# Helping Businesses Grow

Grow your business with deposit and lending solutions including Commercial Real Estate Loans, Lines of Credit, Term Notes, SBA 504 and 7(a) Loans.

Jack D. Kane - Commercial Lender


kanej@ffbf.com | 850-545-7700 | ffbf.com



FIRST FEDERAL BANK



*intimacy  
movement  
education  
consultations*



**HANNAHFAZIO.COM**

Oct 13-22, 2023 at the  
Fallon Theatre:



Learn more and subscribe to a  
season of thrilling theatre:  
[tickets.theatre.fsu.edu](https://tickets.theatre.fsu.edu)



The *School of Theatre*  
AT FLORIDA STATE

*Break a Leg!*

LEONARD & WITHERS,  
CPAs, PL

[LeonardWithersCPAs.com](http://LeonardWithersCPAs.com)



BOONEDOCKS

Oyster Co

sustainably raised premium boutique oysters

[www.BoonedocksOysters.com](http://www.BoonedocksOysters.com)

## PRODUCTION CREW BIOGRAPHIES

**JAMES ALEXANDER BOND** (*Director*) has directed more than 250 productions from New York to England and regionally across America, including over two-thirds of Shakespeare's canon, numerous musicals and many new works. Among his Shakespeare directing credits are the Pearl Theatre Company in New York, New York Public Libraries, Richmond Shakespeare, Illinois Shakespeare, Virginia Shakespeare Festival, and MaineStage Shakespeare. James holds a BFA from Ithaca College and a MFA in Directing from the University of California at Davis.

**BLAKE BORSAGE** (*Sound Operator*) earned a bachelor's degree in Communications & Media Production from the University of North Alabama. From camera operator to audio engineer and post-production editor, he has served a variety of media production and music industry roles over the past two decades. Blake is honored to collaborate with the 2023 SSC cast and crew to bring Shakespeare's timeless works to life on stage.

**MARNIE EARL** (*Prop Designer/Manager*) has been involved in community theatre since 2014, mainly as a performer and designer, with a specialty in custom-crafted props. She is currently the Theatre TCC Prop Manager, and past productions there include *Something Rotten*, *Head Over Heels*, and *Peter and the Star Catcher*. Other past prop work: *The Drowsy Chaperone* & *Murder on the Orient Express* (Theatre Tallahassee), *Into the Woods* (Wanderlust Musicals on the Move), *The Long Goodbye* (FAMU Essential Theatre), and more. As always, a big thank you to Wayne, Ken, Katy, and everyone else for all their hard work and support!

**HANNAH FAZIO** (*Intimacy Coordinator*) is a writer, educator, and intimacy professional. She holds a master's degree in drama therapy from NYU and a bachelor's degree in theatre from Hamilton College. Currently, Hannah is a Ph.D. Candidate in theatre and performance research at FSU. Over the past decade, Hannah has been a yoga and meditation leader, teaching thousands of classes throughout Chicago, New York, Minneapolis, Baltimore, and Tallahassee. Also a playwright and performer, Hannah's work has

been featured at Manhattan Repertory Theatre, The Living Gallery, Bizarre Bushwick, Brooklyn Wildlife, Dixon Place, Hamilton College, NYU, and FSU. For more information, go to [hannahfazio.com](http://hannahfazio.com).

**KATY FEDORE** (*Costume Designer*) is the costume designer and wardrobe manager for SSC. Her work has been featured in *Much Ado...*, *A Mini Midsummer Night's Dream*, *Twelfth Night*, and *Macbeth*, as well as other productions in the local community and eastern US. She began designing in middle school, then took a detour into a career as a cardiopulmonary nurse, but never lost her love for creating costuming.

**BEN GUNTER** (*Music Director*) loves music's power to carry people across times, creeds, and cultures, into shared experiences that build community. He has made music for projects as different as SSC's *Macbeth* (twisting tunes from Scotland into a sonic witches' brew), Terry Galloway's *Ugly Girl* (weaving children's songs into a soundscape for exploring queer disability), and Theater with a Mission's Finding Tallahassee (reviving tunes from 1824 to examine the Capital City's bicentennial). A third-generation Floridian and the music director for SSC's first incarnation, Ben feels honored to be making music to move audiences in Cascades Park again.

**MARISA HASTY** (*Assistant Director*) is a proud wife, sister, and fur momma who has had a love for theatre since high school. She has experience working both on stage and behind the scenes, and her involvement with theatre spans more than a decade, taking part in numerous productions with organizations such as Theatre Tallahassee, Monticello Opera House, Thomasville Onstage and Company, and Gulf Coast State College. This is her fourth production with SSC and she is excited to be back again for another fun Shakespeare in the Park. She would like to thank her husband Connor, her siblings Tara and Devlin, and the cast and crew!

**JACK JAMMER** (*Set Designer*) is a local designer and actor who has a penchant for Shakespeare. Jack's recent design work includes Theatre Tallahassee's *The Tempest* and Quincy Music Theatre's *Sunday in the Park with George*. Jack would like to thank his incredible wife Brennan.



# PRODUCTION CREW BIOGRAPHIES

**CALLA MACNAMARA** (*Producer*) is the Education and Engagement Manager for Opening Nights at FSU. With more than 20 years of experience in the performing arts, Calla has created original programs and managed countless productions and performing arts events.

**MIKE MOCK** (*Master Carpenter*) is excited to work on his first show with SSC. Mike has worked on over 100 shows regionally. When not building sets or working on other elements for theatre, he works as the Shop teacher at Leon High School and is the Owner of Mock Enterprises where he can assist with any and all of your home improvement needs. He wants to thank the cast and crew, as well as his wife Naomi and his menagerie of pets at home.

**TODD RANDALL** (*Lighting Designer*) has worked on previous SSC productions as lighting designer including *A Midsummer Night's Dream*, 2015; *The Comedy of Errors*, 2016; *Much Ado About Nothing*, 2022; *Julius Caesar Dinner Theatre*, 2022; and the AEA Stage Manager for *As You Like It*, 2017. Other credits include Production Stage Manager for Martha Graham and the Martha Graham Dance Company; Production Stage Manager for the national tour of *The Pointer Sisters Ain't Misbehavin'*; and Lighting Director and live event Production Manager for Disson Skating's Figure Skating Spectacular TV series airing on NBC and ABC until 2017. He resides in Monticello, FL where he's Technical Advisor for MADCO Productions.

**SAM SMITH** (*Assistant Stage Manager*) is a recent graduate of the Stage Management program at the FSU School of Theatre. Notable credits include *Othello* (Stage Manager), *Sweet Charity* (Calling Stage Manager), and *Much Ado About Nothing* (Assistant Stage Manager). This is her fourth production with SSC, and she is ecstatic to be a part of the team again. She would like to thank her mom, her brother, and her close friends for all their love and support.

**STEPHEN SMITH** (*Stage Manager*) is excited to work with SSC once again. Stephen previously stage-managed SSC's *A Town Divided* (2023), *Julius Caesar* (2022), *Much Ado...* (2022), and *A Mini-Midsummer Night's Dream* (2020/21). When not working in the theatre, you can find Stephen's creative works on the

[improvingliteracy.org/kidszone](http://improvingliteracy.org/kidszone) website where he is the writer for a comic book series dedicated to helping children learn reading skills to cope with dyslexia. Stephen would like to thank his wife and children for their never-ending support, and for allowing him to always chase his creative dreams.

**STEPHEN HODGES** (*Sound Design*) is a full-time professional city planner and part-time musician who has played for theatrical productions since high school. He has created soundscapes for the SSC's *A Midsummer Night's Dream*, *A Comedy of Errors*, *As You Like It*, *Much Ado About Nothing*, and *Julius Caesar*.

**STEVIE FENTON** (*ASL Interpreter*) interprets far and wide - from televised hurricane briefings (Florida has hurricanes you know!) to theatrical performances with the last five SSC plays and Mickee Faust shows, to interpreting for medical, educational, and religious assignments and more—all interesting challenges. She has worked in K-12, in college interpreter training, as a trainer for a national Video Relay Service company, and currently with Vocational Rehabilitation working with deaf adults who want to work. All of her adventures allow her to work with the Deaf community, use sign language, and love life! Stevie's favorite saying is: "Life is never boring!" Stevie's favorite person is her biggest cheerleader, her spouse, Bill Reynolds.

**BEN JACKSON** (*ASL Interpreter*) Ben Jackson is thrilled to be interpreting his first Shakespearean play after spending the last 5 years interpreting all levels of theater around Florida. Working to make entertainment accessible is a passion and combines two of his great loves: sign language and theater. He is very proud to be interpreting for such a dedicated and talented troupe as this.

**BLAKE KANDZER** (*Poster Art Illustration*) is an award-winning designer and illustrator, with 30 Addy Awards (American Advertising Federation) for both design and illustration; 1 Florida Print Award; and 20+ years of illustration, creative direction, consulting, and graphic design experience. Portfolio and contact info at [kandzer.com](http://kandzer.com).

# BOARD & STAFF

## Executive Committee

**Chip Chalmers**  
*Chair*

**Laura Glenn**  
*Vice Chair*

**Bert A. Mitchell**  
*Secretary*

**Curt Blair**  
*Treasurer*

## Members at Large

**Kim Newman**  
**Coman Leonard**  
**Wendy Wiener**

**Laura W. Johnson**  
**Scott Carswell**  
**Bob Howard**

**Jessica Lowe-Minor**  
**Cole Robinson**  
*Student Board Member*

## Staff

**Bianca Montague**  
*Executive Director*  
**Kelby Siddons**  
*Communication Director*

**Robin Jackson**  
*Bardlings Director*

**Camryn Wells**  
*Grants Manager*

**Jason Chimonides**  
*Education Director*

**Phil Croton**  
*Southern Shakespeare  
Educator*

**Devon Glover**  
*Southern Shakespeare  
Educator*



# SOUTHERN SHAKESPEARE COMPANY



BECOME A MEMBER OF THE  
**SOUTHERN SHAKESPEARE COMPANY!**  
JOIN ONLINE . . .

[southernshakespearefestival.org/become-a-member/](https://southernshakespearefestival.org/become-a-member/)

# ANTONY & CLEOPATRA

## A Not So Brief Summary of the Play

### ACT I

**SCENE 1:** In Egypt, focused on Queen Cleopatra, Antony is dismissive of his duties as a member of the Roman Triumvirate.

**SCENE 2:** Antony learns his wife Fulvia has died. He decides to break free of Cleopatra and return to Rome.

**SCENE 3:** Cleopatra taunts Antony before finally wishing him well. He assures her of his love.

**SCENE 4:** In Rome, Caesar is warned the rebel Pompey is aided by pirates and hopes Antony will return to his soldierly ways.

**SCENE 5:** Pompey weighs his chances against Rome with the pirates Menas and Menebrates.

**SCENE 6:** In Alexandria Cleopatra grieves over Antony's absence.

**SCENE 7:** At a meeting of the triumvirate Antony agrees to marry Caesar's sister, Octavia, before they discuss the threat from Pompey.

**SCENE 8:** Now married to Octavia, Antony promises faithfulness. He consults the Soothsayer who advises him to return to Egypt.

**SCENE 9:** Cleopatra learns that Antony has remarried and does not respond well.

**SCENE 10:** Pompey agrees to a truce with Antony, Caesar, and Lepidus.

**SCENE 11:** Antony and Octavia bid farewell to Caesar and depart Rome.

**SCENE 12:** Cleopatra interrogates a messenger about Octavia.

**SCENES 13:** News arrives that Caesar and Lepidus have defeated Pompey, but then Caesar has arrested Lepidus and sentenced him to death. Enobarbus anticipates war between Antony and Caesar. Octavia begs to be sent as an intermediary between them.

**SCENE 14:** Caesar reports that Antony, now in Egypt, has publicly crowned himself and Cleopatra. Octavia arrives to negotiate for Antony, whom she believes is still home in Athens.

**SCENE 15:** Enobarbus tells Cleopatra that her presence is a distraction. Antony accepts Caesar's challenge to fight a naval battle.

**SCENE 16:** During a battle at sea, Cleopatra unexpectedly departs with her ships. Antony follows her, deserting his men who are beaten by Caesar.



### ACT II

**SCENE 1:** Antony tells his attendants to flee, for he no longer deserves their loyalty. He declares to Cleopatra he is filled with despair but he still loves her.

**SCENE 2:** An Ambassador delivers to Caesar Antony's request to live as a private citizen in Egypt or Athens as Cleopatra continues to rule Egypt.

**SCENE 3:** Cleopatra accepts Caesar's offer of deliverance from Antony. Antony has the messenger Thidias whipped. Enobarbus decides he will desert him.

**SCENE 4:** Maecenas recommends attacking Antony immediately. Caesar agrees.

**SCENE 5:** Antony lets Cleopatra help him armor before the battle. He learns Enobarbus has deserted to Caesar and has his belongings sent after him.

**SCENE 6:** At Caesar's headquarters, Enobarbus finds he made the wrong choice deserting his friend.

**SCENE 7:** Agrippa and his troops retreat. Antony returns to Cleopatra.

**SCENE 4:** Outside Caesar's camp, Enobarbus takes his own life.

**SCENE 8:** After another battle on both land and sea Cleopatra's navy has deserted to Caesar and that the battle is lost. Antony blames Cleopatra and threatens to kill her.

**SCENE 9:** Cleopatra takes refuge in a monument. She sends Antony false word that she has committed suicide.

**SCENE 10:** Antony orders Eros to kill him, but Eros kills himself instead. Antony then attempts to fall on his sword, but succeeds only in wounding himself. Alexas brings word that Cleopatra is still alive.

**SCENE 11:** Antony is hoisted up to Cleopatra's hiding place in the monument. Before he dies, Antony tells Cleopatra that she should trust only Agrippa among Caesar's court.

**SCENE 12:** Caesar mourns the death of Antony. An Egyptian appears, sent by Cleopatra to receive Caesar's orders. Caesar sends Agrippa to Cleopatra, assuring her mercy.

**SCENE 13:** Agrippa arrives at the monument and assures Cleopatra that Caesar will give Egypt to her son. When Gallus arrives with soldiers from Caesar to guard her, Cleopatra attempts to stab herself but is disarmed by Agrippa. Maecenas arrives to warn Cleopatra that Caesar intends to parade her in a show of public disgrace through the streets of Rome. Caesar arrives offering mercy to Cleopatra and she feigns submission. After Caesar leaves, Cleopatra sends Charmian on a secret errand. Charmian returns and a Countryman arrives with a basket containing a poisonous snake. Cleopatra holds the poisonous snake to her breast and dies, along with her faithful maids. Maecenas and Caesar return, and Caesar declares that Cleopatra shall be buried with Antony.

To sell or  
not to sell?  
*Call Jessica!*

Jessica Lowe-Minor  
REALTOR®  
(850) 228-3646



**SUPERIOR REALTY**  
GROUP



[www.stayintally.com](http://www.stayintally.com)



**Holiday Inn**  
AN IHG® HOTEL

TALLAHASSEE EAST CAPITOL - UNIVERSITIES  
2003 APALACHEE PARKWAY  
TALLAHASSEE, FL 32301  
850.567.9863

BOOK YOUR STAY TODAY



**FRIENDS OF LAKE JACKSON**

to preserve, enhance, & maintain

Friends of Lake Jackson, Inc. was formed in 1998 to organize the efforts of informed and concerned citizens who share a desire to protect Lake Jackson. FoLJ works with local, state and federal governmental agencies to arrest the further decline of this key piece of our natural heritage.



*Become a member today to help support our efforts!*  
[Visit FriendsOfLakeJackson.org](http://VisitFriendsOfLakeJackson.org) to learn more.

**ENVIRONMENTAL  
CONSULTANTS, LLC**  
Tallahassee Based. Florida Focused. Nationally Networked.

**“One touch of nature makes  
the whole world kin”**  
– William Shakespeare  
*Troilus and Cressida*

[SSEnvironmentalConsultants.com](http://SSEnvironmentalConsultants.com)

**FSI is Proud to Continue  
Our Support for Southern  
Shakespeare Company!**

**TRUST SOLUTIONS**

*Funeral Services, Inc. Specializes in the  
Total Administration of Deathcare Sales  
Programs for PreNeed and Perpetual Care  
Trusts.*

**[www.FSITrust.com](http://www.FSITrust.com)**

*Toll-free 800-749-1340  
Telephone 850-425-13400  
PO Box 13407 • Tallahassee, Florida 32317*

**Michael &  
Judy Wilson  
Sheridan**

**“Be not afraid  
of greatness”**

**SHERIDAN  
CENTER FOR  
THE ARTS**

**Bryant  
Miller  
Olive**  
ATTORNEYS

PROUD SUPPORTER OF THE

**SOUTHERN  
SHAKESPEARE  
COMPANY**

[www.bmolaw.com](http://www.bmolaw.com)

# *The* **BARDLINGS**

## *As You Like It*



*Directed By*  
**Robin Jackson  
and  
Phil Croton**

*Music Composed and  
Arranged by*  
**Jason Chimonides**

*Adapted by*

**Pat MacEnulty, Phil Croton, and Robin Jackson**

*Music Co-directors* Jason Chimonides (*guitar, vocals*), Jenn Taylor (*violin, percussion, vocals*)

<i>Costumes</i>	Lyndsey Woods	<i>Plant Design</i>	Just Fruits and Exotics Nursery
<i>Sound Technician</i>	Ashley Costello	<i>Platform Construction</i>	Phil Croton
<i>Stage Manager</i>	Emily Cole	<i>Banner Construction</i>	Marnie Earl
<i>Costume Assistant</i>	Alejandra Gutierrez	<i>Scenic Painters</i>	Melinda and Bob Copper

## *Directors' Notes*

**The Bardlings** are the junior acting company of the Southern Shakespeare Company, composed of middle and high school students. The Bardlings perform twice a year, in addition to workshops, guest lectures, and community theatre-based field trips. At this year's festival, we are thrilled to be presenting a fun and music-filled adaptation of Shakespeare's comedy, *As You Like It*. **The Bardlings** pride themselves in creating productions that bring traditional Shakespeare to life for all ages. This year we chose to set our story during the vibrant times of the 1960s. The plot of *As You Like It* takes us from the self-serving world of the Court to the colorful Forest of Arden where our characters learn to be free and live a life at one with nature. We could not be more proud of this troupe of talented young actors for their dedication and commitment.

Please enjoy the show!

*Robin Jackson & Phil Croton*  
*Co-Directors*

## *Thank You*

Christ Classical Academy  
Just Fruits & Exotics  
Pat MacEnulty  
Justin Hughes  
David Fairbanks  
Mattie Ward  
Katy Fedore

Jenn Taylor  
Alejandra Gutierrez  
Jack Jammer  
James Alexander Bond  
Bianca Montague  
Laura Johnson  
Theatre TCC!

Bardlings' Family and Friends

# *The* **BARDLINGS**

## *As You Like It*

### ***Cast List***

*(in order of appearance)*



**Madeline Ward** – *William Shakespeare*

**Magrathea Burke** – *Amiens / Charles the Wrestler*

**Rickson Pfeiffer** – *Oliver*

**Laurel Standridge** – *Celia*

**Sofi Howard-Gutierrez** – *Rosalind*

**Benjamin Hall** – *Touchstone*

**Belle Taylor** – *Frederick*

**Timothy Hughes** – *Orlando*

**Tegan Monroe** – *Anne*

**Daily Forsmans** – *Cora*

**Hadlee Smith** – *Silvius*

**Tali Grettenburger** – *The Duke*

**Miriam Hall** – *Jacques*

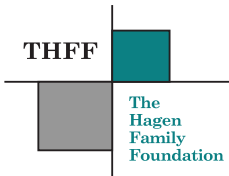
**Lana Baumbach** – *Audrey*

**Cecilie McGrew** – *Phoebe*

**Oliver Allen** – *The Lion / Ensemble*

**Kai Weinrich** – *The Lioness / Ensemble*

## *Bardlings Sponsors*



we know life is busy.  
that's why we do the  
work for you.

simple human sense

**Earl Bacon Agency**

INSURANCE • BONDS

TALLAHASSEE • 850.878.2121  
earlbacon.com

*Auto-Owners*  
INSURANCE

LIFE • HOME • CAR • BUSINESS

WRW

L E G A L

*We Support the*  
**Southern  
Shakespeare  
Company!**

*“Age cannot wither her,  
Nor custom stale  
Her infinite variety:  
Other women cloy  
The appetites they feed:  
But she makes hungry  
Where most she satisfies”*

*Antony and Cleopatra,  
Act 2, Scene 2*



**TLH,  
Upgrade Your  
Seltzer.**

Vodka. Seltzer.  
Real Juice.



Proud sponsors of the  
Southern Shakespeare Festival

**NUTRL**  
Vodka. Seltzer. Real Juice.







**the fuzz**  
— pet sitting —

— CARING FOR —  
**TALLAHASSEE'S**  
VERY IMPORTANT PETS SINCE 2014

**Alison Quinn**

Find us on  [www.facebook.com/TheFuzzPetSitting](http://www.facebook.com/TheFuzzPetSitting)



**CALLA MACNAMARA**  
*Proudly Supports the  
Arts in Tallahassee*

**9ROUND**  
30 MIN KICKBOX FITNESS

in the Whole Foods Plaza  
1817 Thomasville Rd #620  
(850) 840-0040  
9Round.com



**YOUR JOURNEY  
BEGINS HERE**



 **premier**  
HEALTH & FITNESS CENTER

3521 MACLAY BOULEVARD  
TALLAHASSEE, FL 32312  
**850-431-BFIT(2348)**  
**PREMIERTLH.COM**

# SPONSORS & PARTNERS



TALLAHASSEE  
COMMUNITY  
COLLEGE



TALLAHASSEE  
Community  
Redevelopment  
Agency



Florida  
ARTS & CULTURE



CITY OF  
TALLAHASSEE



Visit  
*Tallahassee*  
Pretty. Unexpected.



**Target**  
Print & Mail



## Additional Sponsors

Beth & Curt Blair



# SPONSORS & PARTNERS

## Minstrels

Terri Carrion

Michael & Judy Wilson Sheridan

Mr. & Mrs. Michael Beck and Family



## Muses

Chip Chalmers

Laura Glenn &  
Stephanie Schwartz

Gloria Priest

Jeff Mandel  
Janet Hinkle

Laura W. Johnson

Calla MacNamara



## Poets

Anonymous

Scott & Julie  
Carswell

Jessica  
Lowe-Minor



## A Word from SSC's Education Director



The Southern Shakespeare Company has a year-round educational mission that seeks to make Shakespeare fun and accessible to a diverse local audience through engaging workshops and productions. Offering varied programming to Leon and surrounding counties, we offer customized educational outreach featuring professional Teaching Artists (i.e. our Shakespeare Man and Sonnet Man programs) as well as enriching school day productions and digital curricula.

For more information on our year-round education mission and how you can get involved, please visit our website at [www.southernshakes.org](http://www.southernshakes.org) or contact [Jason@southernshakes.org](mailto:Jason@southernshakes.org).

**Jason Chimonides,**  
*Education Director*





**VyStar Credit Union**  
 proudly supports the  
**Shakespeare in the Park**  
 Festival.

vystarcu.org |



MEMBER FDIC  
 All new accounts are subject to approval. Programs, rates, terms, conditions and services are subject to change without notice.  
 ©2012 VyStar Credit Union.



  
**CAVALLO FARMS**  
 Where Equestrians are Created  
 www.CavalloFarms.com



Home of



Comprehensive  
 Hearing Care Means  
 Hearing Loss  
**PREVENTION,  
 DETECTION, and  
 CORRECTION**



Complete Hearing Care at Two Locations:  
 1405 Centerville Road #5400  
 2625 Mitcham Drive

**(850) 877-0101**  
**TallahasseeHearingHelp.com**

*Congratulations  
 to the  
 Cast and Crew!*



THE  
**WILLIAMS WAYNE  
 & TERRY GROUP**

BROKERED BY: SUPERIOR REALTY GROUP

**WilliamsWayneandTerry.com**

**SCAN & DONATE**  
*Directly to*  
  
**SOUTHERN SHAKESPEARE COMPANY**



**venmo**

**Animal TALES**  
*programs providing edZOOcation*

Offering animal “edu-tainment” for almost 15 years! We strive to educate, entertain, and inspire people of all ages. We allow up-close encounters with animals from all over the world, and we offer birthday parties, corporate events, school & library presentations, and so much more! Call or email us to book your experience today!

**(570) 428-4259**  
**animaltalesllc@gmail.com**

EST  1978

**JUST FRUITS**  
 AND EXOTICS  
 CRAWFORDVILLE, FLA

**www.justfruitsandexotics.com**  
 850-926-5644  
 Nursery Open Daily 9am-5pm  
 Closed Tuesdays

**PROOF BREWING CO.**  
 TALLAHASSEE • FLORIDA




**850-577-0517**  
 1320 SOUTH MONROE ST.  
**PROOFBREWINGCO.COM**



SOUTHERN SHAKESPEARE COMPANY *presents*

# ANTONY & CLEOPATRA

*Written by William Shakespeare*

## The Adderley AMPHITHEATER AT CASCADES PARK

- 1 Welcome & Info Tent
- 2 Welcome & Info Tent
- 3 Education Programming Booth
- 4 Shake Shoppe
- 5 VIP Tent
- 6 Pepsi Wagon
- 7 Water Truck
- 8 ShakesBeer Sales
- 9 Port-a-lets
- 10 VIP Parking
- 11 Handicapped Parking
- 12 Volunteer Parking



Pass Parking Lots for **VIP Parking** is designated by the **P** on the map here

# *Partners in Prose ...*



SOUTHERN  
SHAKESPEARE  
COMPANY



**CUNEO**  
*Creative.Com*

*(Branding, Marketing, Advertising,  
Design, Social Media & Websites)*

416 North Adams Street • Tallahassee, Florida 32301

850-402-0027 • [alcuneo@cuneocreative.com](mailto:alcuneo@cuneocreative.com)

[www.CuneoCreative.com](http://www.CuneoCreative.com)